

## Rowan Technologies Ltd – Roof Consultancy Case Studies

Rowan Technologies Ltd have extensive experience of both contemporary and historic structures, providing a comprehensive specification, monitoring and inspection service for all types of metallic roofs. The following case studies are just some of the projects that Rowan Technologies Ltd have been involved in.

For more information, please visit [www.rowantechnologies.co.uk](http://www.rowantechnologies.co.uk) or call 0161 748 3644.

### ***Hampton Court, London*** ***Lead - Consultancy, Lead Inspection***

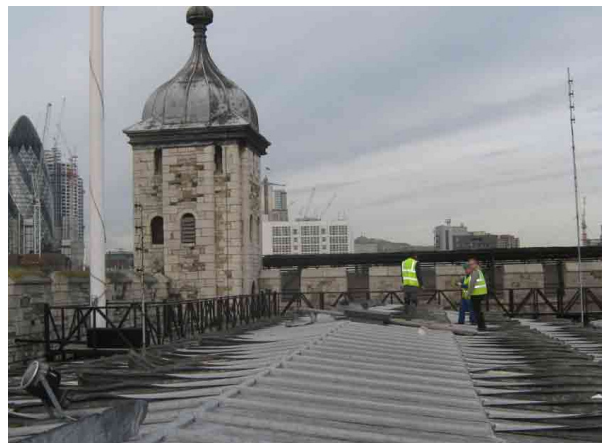
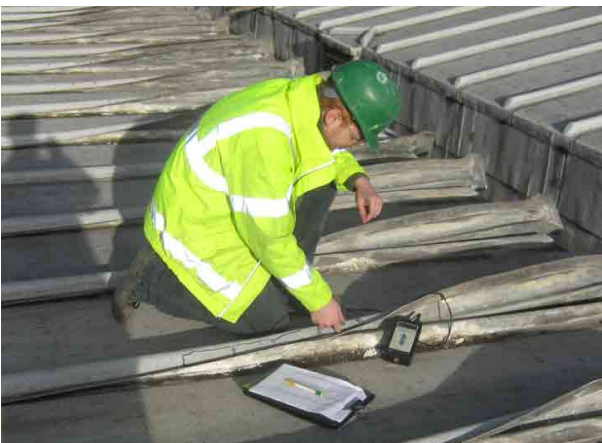


The Historic Royal Palaces were co-funders (with English Heritage and the Lead Sheet Association) of a large research and development project into the performance of lead roofs carried out in the late 1990s. Extensive testing was carried out on the roof of the Great Hall at Hampton Court. This had been subject to severe underside corrosion as a result of oak timbers within the roof and excessive heating under the floor which drove moisture up into the historic roof.

Rowan Technologies developed the chalk protection method of protecting the underside of lead roofs during this R&D project and the Great Hall was one of the first roofs to take advantage of this development when it was re-roofed in 1999.

2010

**The White Tower, London**  
**Lead - Consultancy, Lead Inspection**



The Tower of London is one of the most famous landmarks in England. Rowan Technologies were engaged as materials selection/roof design consultants for the repair and replacement of the historic lead roofs on the Tower of London in the late 1990s.

In 2009, Rowan Technologies completed a full lead condition and thickness survey of all 650 lead bays of the White Tower roof.

2010

***Liverpool Cathedral***  
***Stainless Steel - Consultancy, Material Selection***



Rowan Technologies was engaged as the principle consultant for materials selection for the recently completed renovation of Liverpool Metropolitan Cathedral. The work included selection of the low-reflective stainless steel sheeting for the Cone roof, the incorporation of environmental monitoring systems within the ventilated roof, selection of the materials/methods for re-cladding the ribs and many other areas of repair/replacement.

2010

**Old Admiralty Building**  
**Lead and Copper – Consultancy, Materials Selection**



Rowan Technologies were materials consultants to English Heritage for the major refurbishment of The Old Admiralty Building in London carried out in 1999. The work included material and design specifications for both the lead and copper roofs on this Grade 1 listed building.